



# iSense

GSM GPRS SMS INTERFACE





# iSense GPRS Transmitter

Evolved from Hanwell's existing range of established radio logging products the iSense is an innovative self contained unit enabling remote monitoring of diverse parameters via wireless GPRS technology.

Locations that previously seemed inaccessible including, buildings, machinery, infrastructure or vehicles can now easily be accessed and monitored.

A number of different sensors can be attached to the iSense in order to monitor parameters such as energy, temperature, pressure, structural stress and many more.

This real-time information is then transmitted via GPRS to a central database, and can be accessed immediately on a PC for viewing, recording and assessment.



## Features:

- Completely self contained (battery operated)
- Date and time stamped monitoring
- Up to five year battery life
- Transmit rate increase on event
- Remote setup options
- Data stored in non volatile memory
- All data recovered in the event of temporary GPRS coverage problems
- Easy to understand journey profile information
- Works with a range of sensor families

## Technical Summary

### Instrument

*Dimensions: 100 x 100 x 60 mm*

*Weight: 600g*

*Power Supply: User replaceable 2 x alkaline 'D' cell Battery pack.*

*Battery Life: Up to five years (Based on one message a day i.e.*

*30 minute pulse count and no events enabled)*

*Case Material: ABS & PC*

***N.B Instrument operating range -20°C to 60°C in a non-condensing RH environment***

### GPRS – Quad band module

*Network Compatibility: Quad band, band user selectable*

*(Quad Band) Aerial Connection: SMA socket*

*Aerial Type: Stubby straight/right angle + optional remote mount on 2mtrs cable*

### Product benefits

- GPRS technology
- Non-Intrusive design
- Easy installation
- A wide range of monitoring parameters available
- Individual configuration options
- Easy reading management system
- Comprehensive analysis and data history
- Up to five year battery life

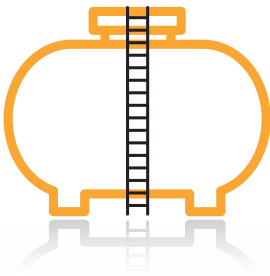


# iSense communication to your local PC is easy using GPRS technology

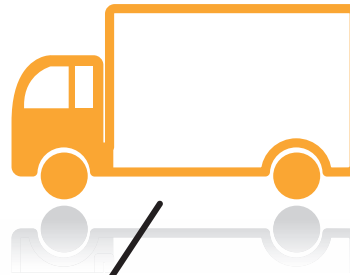
## Typical applications

- Bridge stress and vibration monitoring
- Schools energy monitoring
- Hospitals and hospital food transportation monitoring
- Fridge temperature monitoring
- Civil engineering
- Laboratory monitoring
- Chemical transportation

Application: Oil tank  
Pressure and level



Application: Truck  
Temperature



Application: Bridge  
Shock and vibration



Application: Hospital  
Fridge/freezer



Application: School  
Energy



GPRS – IP Address  
secure access via DMZ  
(demilitarised zone)

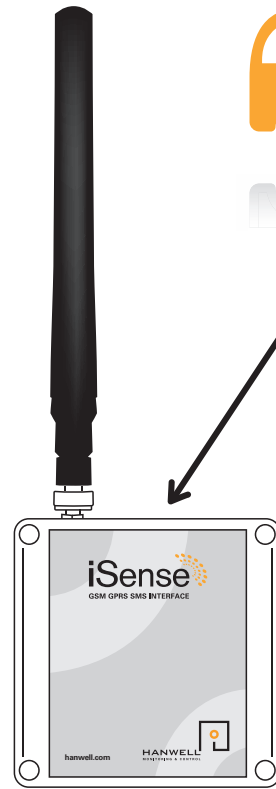
Server



User PC



Network

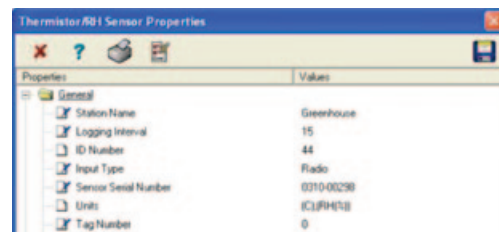




## Uncomplicated set-up capabilities

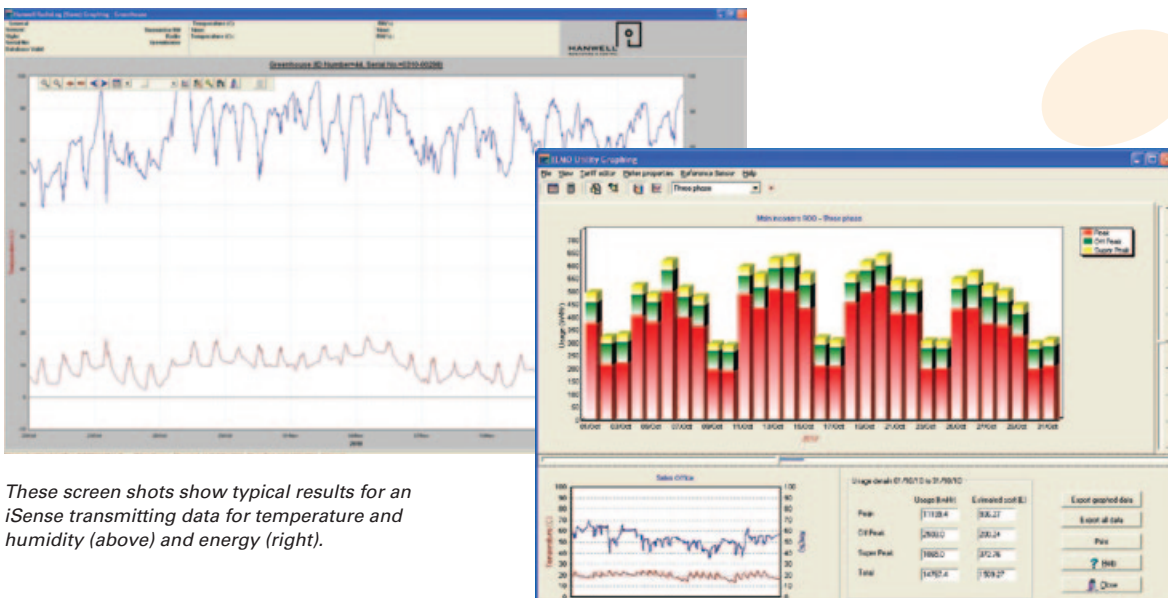
- Easy installation of software
- Clear set up capabilities
- Easily integrated into existing Hanwell monitoring system

The screen shot (right) is an example of the set-up capabilities available to the user.



## Straightforward data retrieval

- Immediate access to graphical data
- Date and time specific
- Clear visual and statistical evidence of iSense environmental conditions



These screen shots show typical results for an iSense transmitting data for temperature and humidity (above) and energy (right).



## IS – iSense Basic Module

The part numbers for the iSense product range are constructed in four parts as follows:

IS: 

C1	C2	C3	PS
----	----	----	----

Where

C1 = code for sensor on channel 1

C2 = code for sensor on channel 2 (00 = channel not used)

C3 = code for sensor on channel 3 (00 = channel not used)

PS = power supply option

Currently available channel options include:

- Temperature
- Humidity
- Voltage
- Current
- Pulse Counting

Not all combinations are possible, please check with factory before ordering.

For parameters not listed, please contact our sales team on +44 (0)1462 688070 or email [sales@hanwell.com](mailto:sales@hanwell.com).

For further information and a full list of part numbers, visit [www.hanwell.com/isense-spec](http://www.hanwell.com/isense-spec)

Each iSense unit requires a valid sim card contract and adequate network coverage at the intended location.



Never compromising on craftsmanship, we have enhanced our products and services through design and manufacture, with all units being produced at our facility within the UK.

We pride ourselves in our ability to accurately interpret customer requirements. If you require the monitoring of any parameter not mentioned in this brochure, please call as we will, almost certainly, have a solution for you.





# Contact

**T: +44 (0)1462 688070**

**W: [hanwell.com](http://hanwell.com)**

Hanwell Instruments Limited  
Pendle House  
Jubilee Road  
Letchworth  
Hertfordshire  
SG6 1SP



Another solution from the IMC Group, incorporating Hanwell Instruments Limited, Jekyll Electronic Limited & Lamerholm Electronics Limited W: [the-imcgroup.com](http://the-imcgroup.com)

